

MUDBET KIT & DRAIN INSTALLATION GUIDE

PRIOR TO MUDBED CONSTRUCTION—ASSEMBLE THE LOWER DRAIN



Remove locking collar and metal drain strainer from traditional 3-part drain.



Attach the metal adapter plate with rubber gasket down using bolts supplied with original 3-part drain.

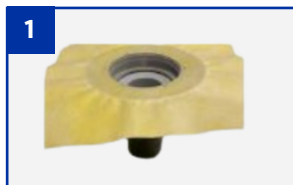


Insert downtube into adapter plate.



Insert oversized red mud cap into downtube. Adjust to height of mudbed to be built.

AFTER MUDBED CONSTRUCTION—ASSEMBLE THE UPPER DRAIN



Once proper mudbed is constructed¹ and cured, remove oversized red mud cap. Fully and firmly insert mudbed flange into the downtube.



Bond and embed fabric on flange to mudbed using thinset.



Cut MiTek Waterproof Membrane to size of floor, dry fit, and mark square to cut out that is aligned with drain flange, leaving at least 2" overlap on all four (4) sides.

Install cut sheet on mudbed floor using thinset and complete waterproof enclosure by installing MiTek Waterproof Membrane Seam Tape and Corners (90/135 inside and outside).



Insert small red cap to keep waste pipe free of debris.

¹Refer to most recent TCNA Handbook for Ceramic, Glass, and Stone Tile Installation for appropriate mudbed construction for installation.

INSTALL DECORATIVE FRAME AND DRAIN COVER



Remove small red cap. Install threaded adapter rings with weep slots. Adjust inner ring height to tile level.



Bond drain frame to height ring using MiTek Adhesive, install decorative drain cover, and adjust to tile height. Install tile as directed by manufacturer and in accordance with accepted industry practice as described by the most recent TCNA Handbook for Ceramic, Glass, and Stone Tile Installation.