

BARRIER SYSTEMS

PREFORMED SHOWER NICHE

Enhance your setup with simple, easy to install storage for tiled bathrooms and showers.

The preformed shower niche is an effective waterproof solution from the lineup of MiTek Watertight System products. They come in one piece, ready to tile in minutes, and are great for new construction & renovations alike.

Less Time. Less Material. More Technology.

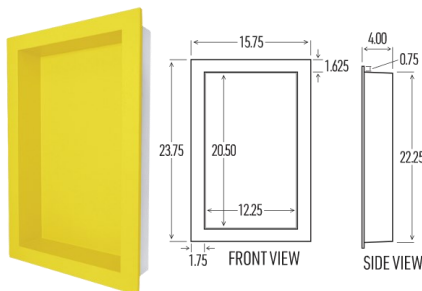


BENEFITS

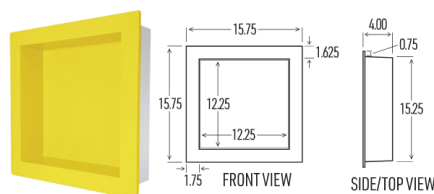
- One piece: leak-proof and risk-free
- Lightweight & durable: easy to handle
- Quick-Tile feature for swift installation
- Built to withstand mold, mildew, and moisture
- Meets ANSI A118.10 Standards for Waterproofing



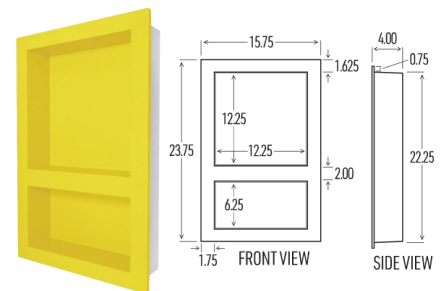
AVAILABLE IN 3 STYLES



RECTANGLE



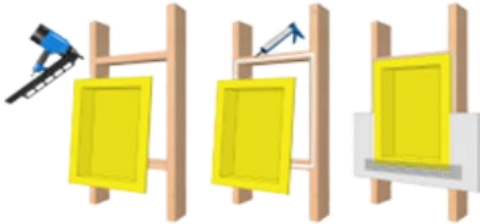
SQUARE



DOUBLE

SHOWER NICHE INSTALLATION GUIDE

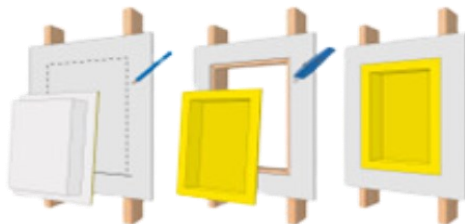
OPEN WALL INSTALLATION



1. Determine the proper height and placement of the niche between the studs and mark them appropriately.
2. Install horizontal cross bracing to support the top and bottom of unit (This is recommended but not required for proper installation).
3. Adhere niche to studs and cross members using MiTek Watertight Adhesive (or other polyurethane caulk) on the back of the flange and contact areas.
4. Install Triton Backer Board tight and flush to the flange.
5. For Triton Waterproof Backer Board, seal the seam between backer board and flange using MiTek Waterproof Seam Tape embedded into thin set mortar, or other waterproofing membrane (liquid or sheet). For Triton Backer Board, treat the seam between board and niche using fiberglass mesh tape embedded into thin set mortar (waterproof using MiTek Waterproof Membrane or MiTek Liquid Waterproof Membrane; must use appropriate accessories).
6. Install tile according to TCNA guidelines.

CLOSED WALL INSTALLATION

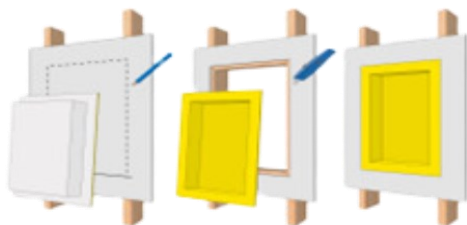
One Substrate Panel



1. Determine stud location - Niche should fit well between studs that are 16 inches on center.
2. Trace outer dimensions of flange making sure the body of the niche is lined up with the inside of the stud(s) and the flange overlaps the stud(s).
4. Cut out the single section of backer board. After niche is set in place check to make sure waterproof coating has remained intact from installation. If there are punctures or other compromises in the coating it is recommended to apply two coats of MiTek Liquid Waterproof Membrane to ensure a waterproof seal.
5. If possible, install horizontal cross bracing above and below niche for added support.
6. Adhere niche to studs and cross members using MiTek Watertight Adhesive (or other polyurethane caulk) on the back of the flange and contact areas.
7. Seal the seam between backer board and niche as described above in **Open Wall Installation**.
8. Install tile according to TCNA guidelines.

CLOSED WALL INSTALLATION

Two Substrate Panel



1. Determine the desired height of niche and draw a horizontal reference line with a level.
2. Place the back of the niche (not the flange) in the desired location using the reference line for level and trace around the edge.
3. Cut through both panels and remove.
4. Place the niche in the opening and trace around the flange.
5. Cut out the superficial layer of backer board and remove.
6. If possible, install horizontal cross bracing above and below niche for added support.
7. Adhere niche to studs and cross members using MiTek Watertight Adhesive (or other polyurethane caulk) on the back of the flange and contact areas.
8. Seal the seam between backer board and niche as described above in **Open Wall Installation**.
9. Install tile according to TCNA guidelines.